



1
2
3
4
5

full
fathom
five

P★F

Full fathom five
thy father lies,
Of his bones
is coral made,
And are those pearls
that were his eyes?

The physicist, Professor Brian Cox, tells us that we, like all things, are energy. And when we die, our energy is absorbed by the universe and becomes a small part of some other elemental force of nature. It seems that our fate, like an autumn leaf falling to the ground, is to be assimilated into something new that enables the cycle of life to replenish and repeat.

Ferdinand's eulogy, in Shakespeare's *The Tempest*, shows us he is comforted by the belief that, thinking that his father has drowned, he has returned to the sea to become corals and pearls, to become something both strange and valuable.

For me, this idea of repurposing manifests itself not on the grand conceptual level of Shakespeare or Professor Cox, but in a more down-to-earth way, by including found items in my work.

I collect up what has been discarded by others and give these objects a new purpose. Here they are welcome, joining the paints and brushes, the mica and foil, the waves and the rain, the glitter and the gold. They become part of something else, something that will be crafted and cared about. They wait patiently to perform their cameo in my renaissance of rubbish.

Odd earrings and broken necklaces become stars and moons; old buttons become rocks and pebbles; other people's detritus, so keenly spotted on long, coronavirus-inspired walks, are purposefully camouflaged into new worlds.

These days I am quite the avid repurposer, but I have tried not to let it become a cliché. Consequently, pieces made entirely from empty plastic drinks bottles or hamburger boxes do not yet appear in my oeuvre, and nor will they. I upcycle but have no aspirations for any moral superiority. I simply collect what I find and include them in my own landscapes, as if they had been abandoned in the same uncaring or unthinking way all over again.



the tempest

Acrylic with gold leaf, glitter, glass, metal foil, amber, pearls,
Chinese coins and found objects on panel
480mm x 1280mm

Details of precious and found objects

Reproduced with the kind permission of Mrs Emma Williams



the wreck of the alba

Acrylic with gold leaf, glitter, glass, metal foil, amber, pearls, coal and found
objects on repurposed dibond panel in recycled frame
800mm x 600mm



botallack storm

Acrylic with gold leaf, glitter, glass
and metal foil on panel
630mm x 630mm





cook's kitchen

Acrylic with gold leaf, glitter, glass, metal foil and found objects on
repurposed dibond panel
700mm x 500mm



devil's den

Acrylic with glitter, glass, pearls, metal foil and found objects on
repurposed dibond panel in recycled frame
800mm x 600mm

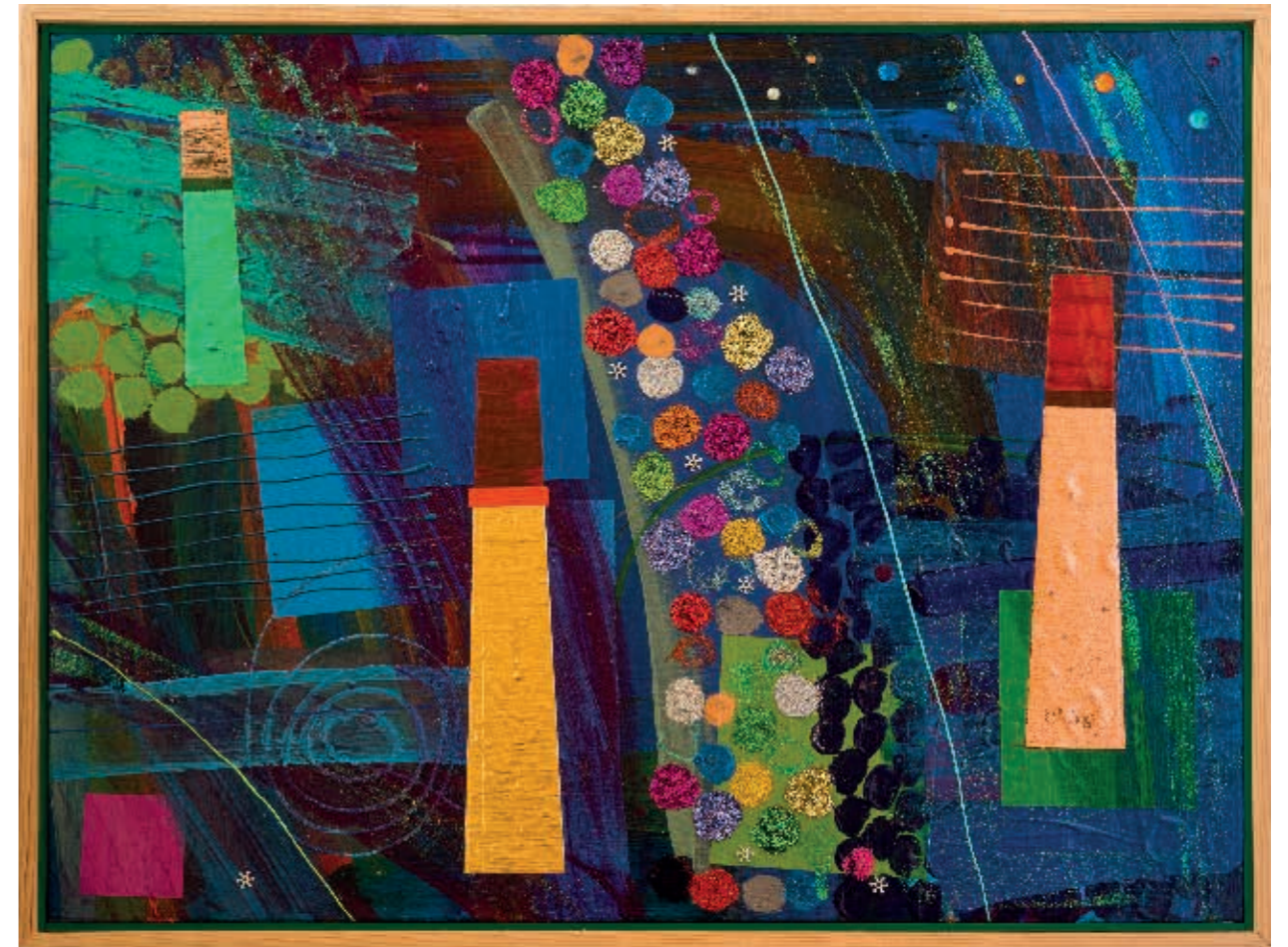
Reproduced with the kind permission of Ms Sylvia Grove





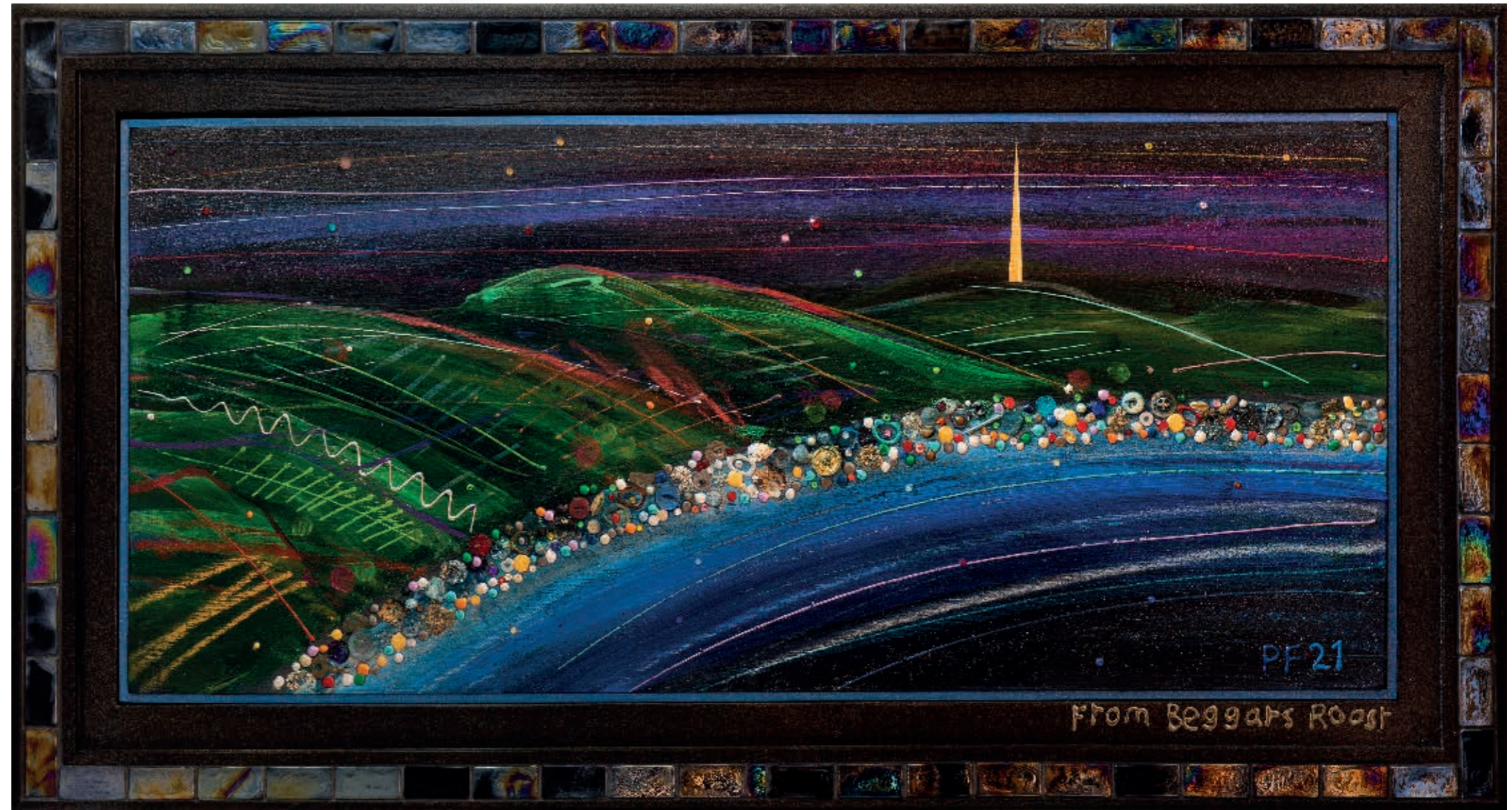
ding dong

Acrylic with gold leaf, coloured silver and copper leaf, glitter,
glass, metal foil and found objects on panel
600mm x 450mm



from beggars roost

Acrylic with gold leaf, glitter, glass, buttons, metal foil,
sea shells, collage and found objects on panel.
Frame of recycled wood from HMS Vernon.
950mm x 510mm





white hill

Acrylic with gold leaf, glitter, glass, pearls, amber, buttons, metal foil and found objects on repurposed dibond panel mounted on recycled acrylic panel
800mm x 600mm



spring tide

Acrylic with gold leaf, coloured silver leaf, glitter, glass
and metal foil on panel
330mm x 330mm



boiling well

Acrylic with gold leaf, coloured silver leaf, glitter, glass
and metal foil on panel
330mm x 330mm



towanroath engine house at wheal coates

Acrylic with gold leaf, glitter, glass, metal foil, buttons, pearls, sea shells and found objects on panel

Details of found objects used

400mm x 1200mm



the wreck of the alba



Previous pages

The wreck of the Alba

Acrylic with gold leaf, amber, pearls, coal, sea shells, glitter, glass,
buttons, metal foil and found objects on panel

400mm x 1200mm

nostramo moon

Acrylic with gold leaf, glitter, glass and
metal foil on panel
630mm x 460mm



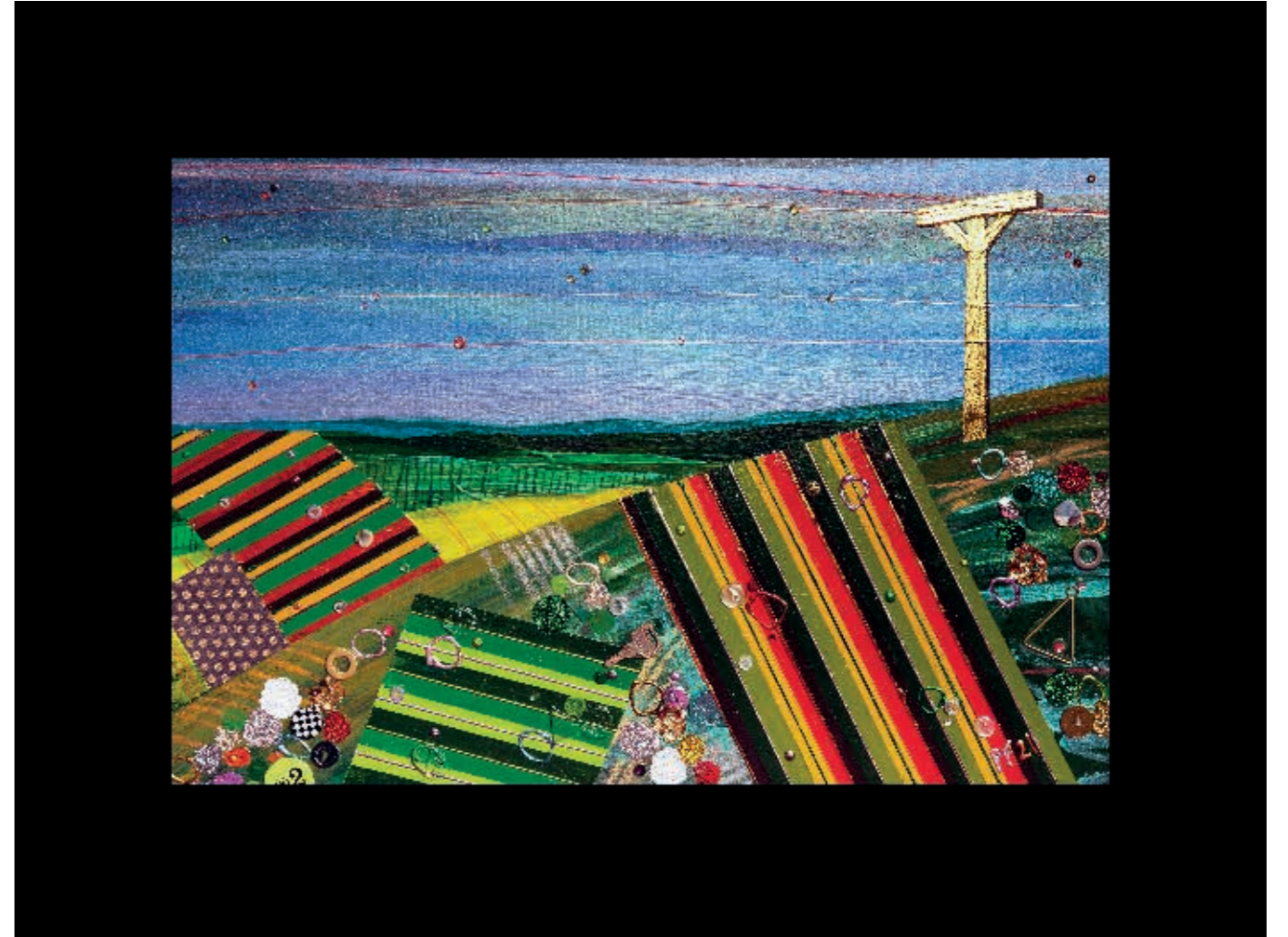
on our way to glastonbury

Acrylic with glitter, glass, pearls, buttons, metal foil, wax seal and found
objects on repurposed dibond panel mounted on recycled acrylic
500mm x 1000mm



combe gibbet

Acrylic and oil pastel with gold leaf, glitter, glass, metal foil, buttons, key,
money and found objects on paper
800mm x 600mm (glazed)





magnox

Acrylic with gold leaf, glitter, glass, metal foil
and found objects on panel
530mm x 600mm



from pendeen watch



Previous pages
From Pendeen Watch
Acrylic with glitter, foiling, coloured silver leaf and gold leaf on canvas
1260mm x 460mm

Reproduced with kind permission of Mr Stephen Ormrod

stormy weather

Acrylic with gold leaf, glitter, glass and
metal foil on panel
600mm x 450mm



on the way to glastonbury, too

Acrylic with gold leaf, glitter, glass, chinese coins, buttons, metal foil, wax
seal and found objects on paper
500mm x 1000mm (glazed)



godrevy storm

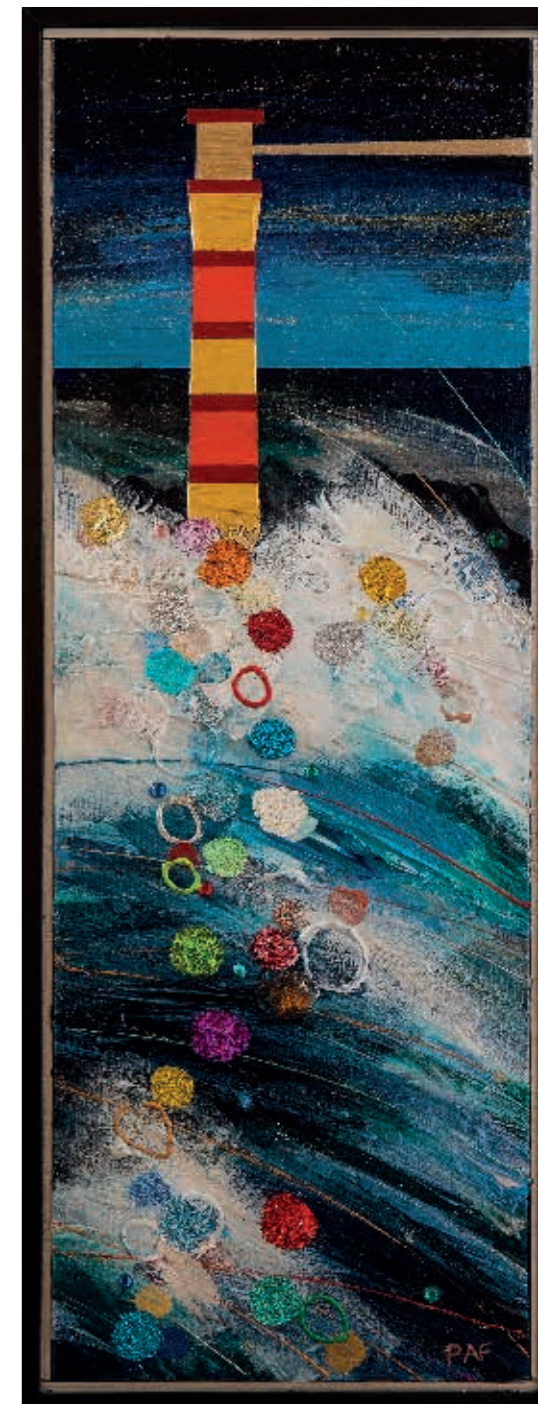
Acrylic with gold leaf, glitter, glass and metal foil on paper
800mm x 600mm (glazed)

Reproduced with kind permission of Mrs Louise Curme



pierre noire
beam to port
beam to starboard

Each panel
Acrylic with gold leaf, glitter, glass
and metal foil on panel
650mm x 250mm





longrock

Acrylic with gold and palladium leaf, glitter, glass, buttons, metal foil,
collage, coins and found objects on paper
550mm x 550mm (glazed)



two views of

cherhill folly



Previous pages
Two views of Cherhill Folly
Acrylic and pastel with gold leaf, glitter, glass, buttons, metal foil and found objects
Left page on paper (glazed) 600mm x 600mm
Right page on panel 520mm x 520mm

st just

Acrylic with gold leaf, glitter, glass and metal foil
stars on canvas
530mm x 530mm



devil's den

Acrylic with glitter, glass, pearls, buttons, metal foil and found objects on repurposed dibond panel mounted on recycled acrylic
800mm x 600mm



wheal coates

Acrylic with gold leaf, pearl, glitter, glass and
metal foil on panel
500mm x 500mm



uffington

Acrylic with gold leaf, glitter, glass, metal foil, pearls and
found objects on repurposed dibond panel in recycled frame
800mm x 600mm

Reproduced with kind permission of Ms Sylvia Grove



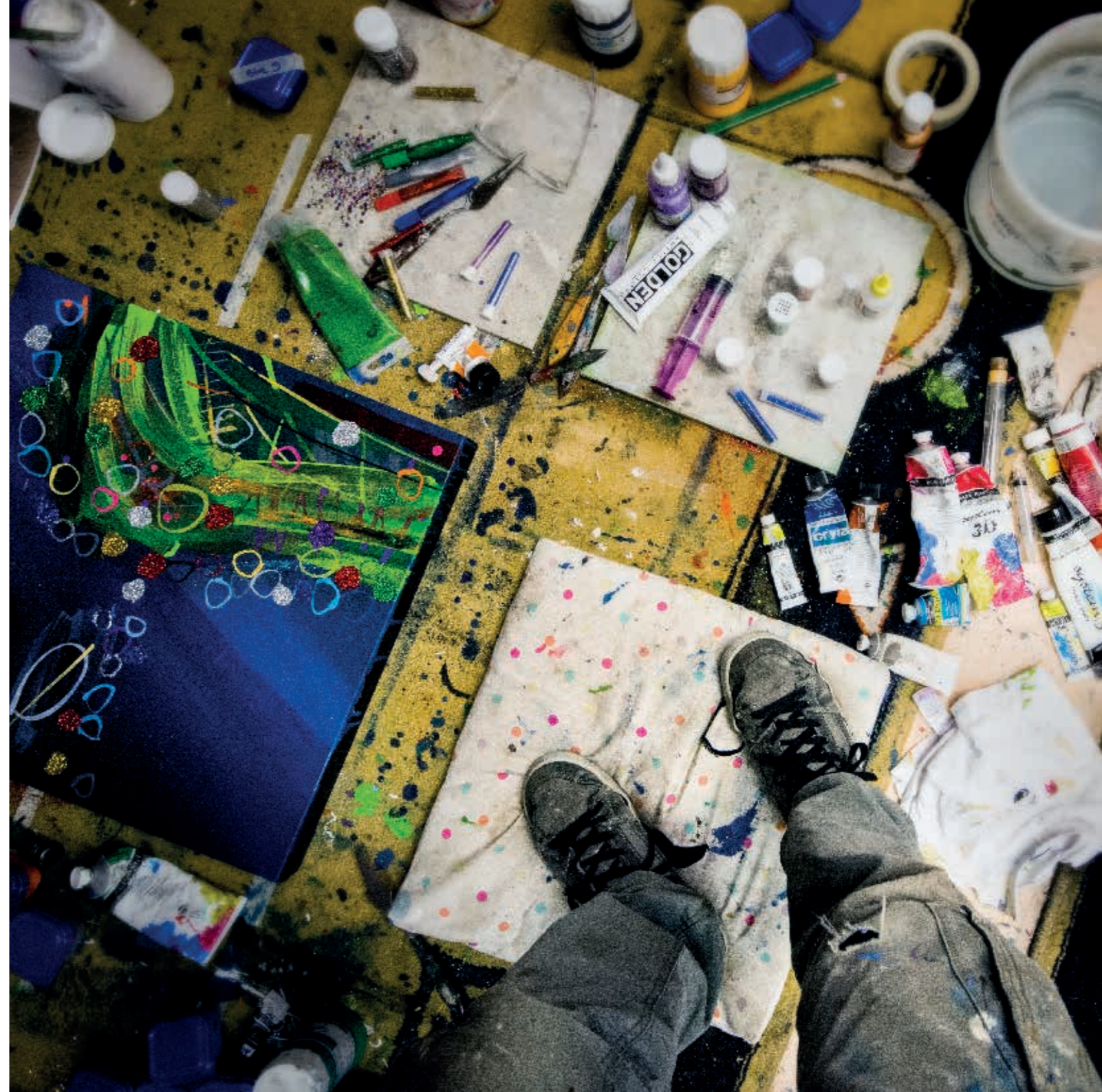


Paul Forsey is an artist, designer and photographer. His work quietly embraces a range of genres, including landscape, architecture and devotional painting and he has featured in books, exhibitions, on television, radio and other media.

His work has been the inspiration for an opera - *Step into the Picture* - composed by Reverend Professor June Boyce-Tillman and orchestrated by *Southern Sinfonia* led by Kay Lawrence. Paul was also an artist in residence at *Southern Sinfonia*. His devotional paintings have toured England including Easter at York Minster, and they have also been used by Lambeth Palace.

Paul's work is in many private collections including ten works purchased by Enterprise Oil, now Royal Dutch Shell.

He was artist in residence at *Newbury Spring Festival* during which time he completed designs for a commemorative stained glass window for Newbury Town Hall, and as creator of *The Newbury Mosaic* he is credited in Pevsner's *Architectural Guide: Buildings of England*. Paul is also named as a 'stop' location for *Pokemon Go*, a popular worldwide game for mobile phones.



No thing of him
doth fade,
But doth suffer
a sea-change,
Into something
rich and strange.

ALBA

P★F

pforsey.co.uk

